

# User Guide for Flash LED calibration

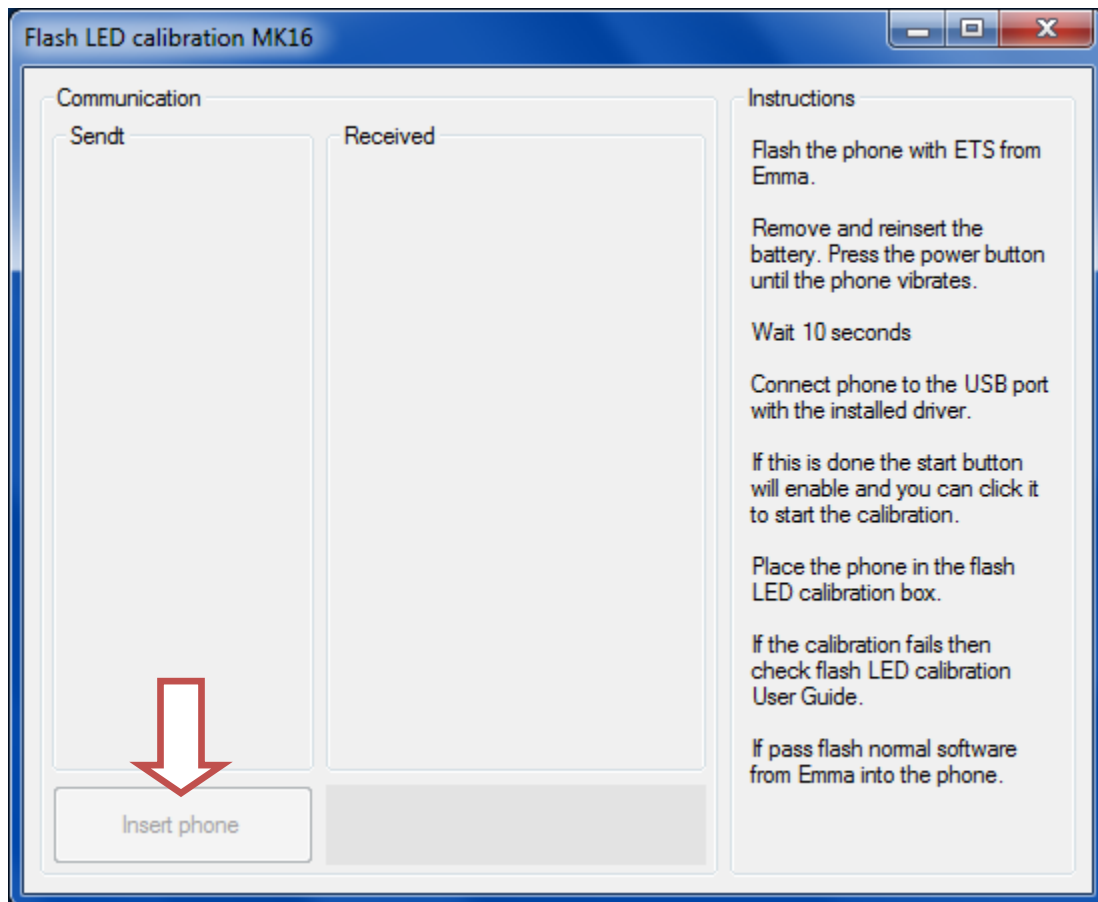
---

Install dotNetFx40\_Full\_x86\_x64.exe if not installed.

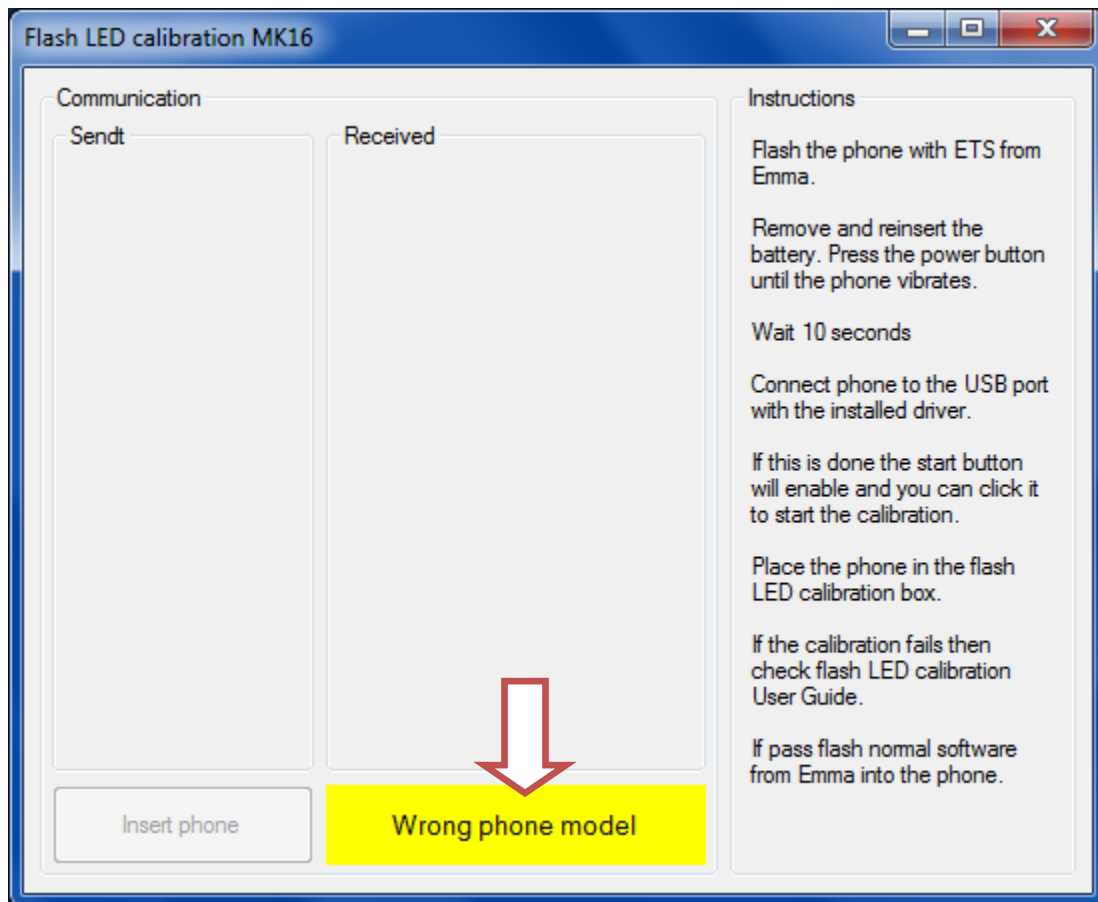
Install SEMC Calibration driver if not installed.

Start the Flash LED calibration.exe and follow the guide next page.

Flash the phone with MK16 ETS from Emma.  
Remove and reinsert the battery.  
Press the power button until the phone vibrates.  
Wait 10 seconds.  
Connect the phone to the USB port with the installed driver.



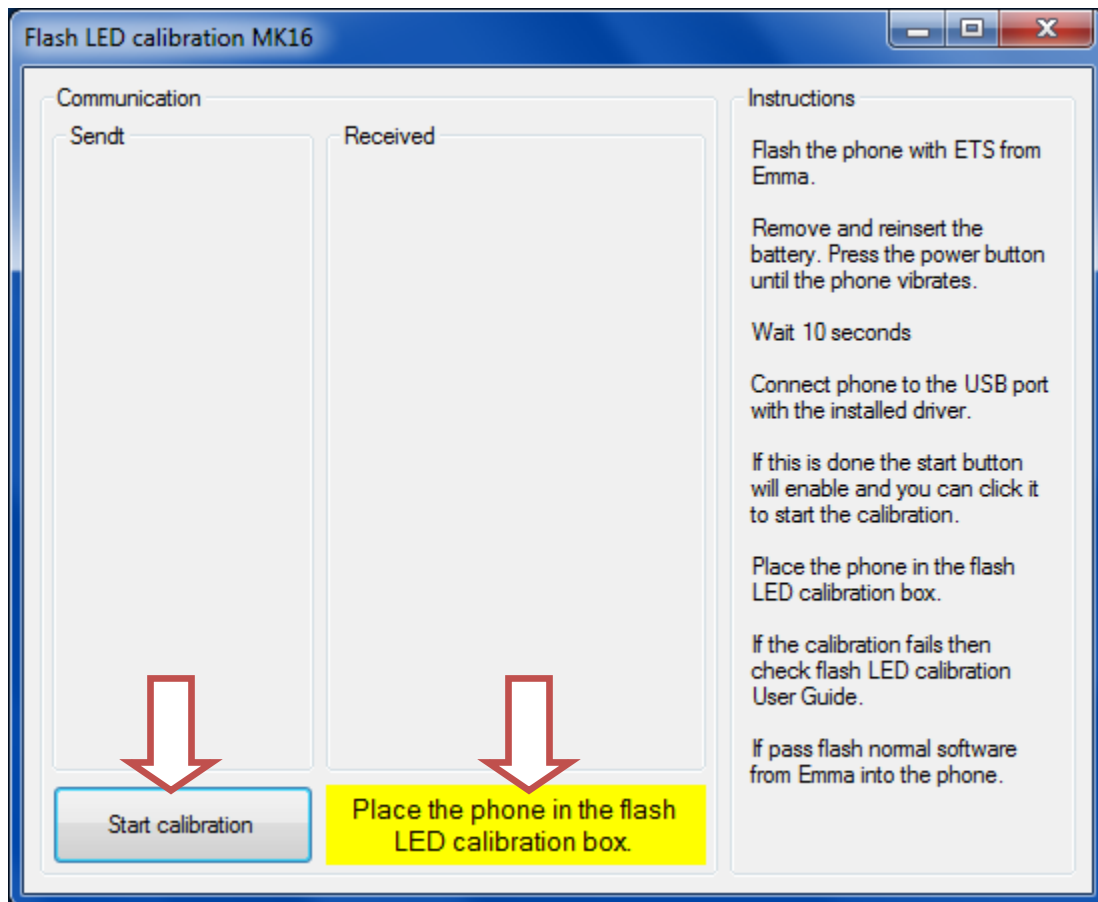
If wrong phone model is shown, you have connected a phone model that is not supported.



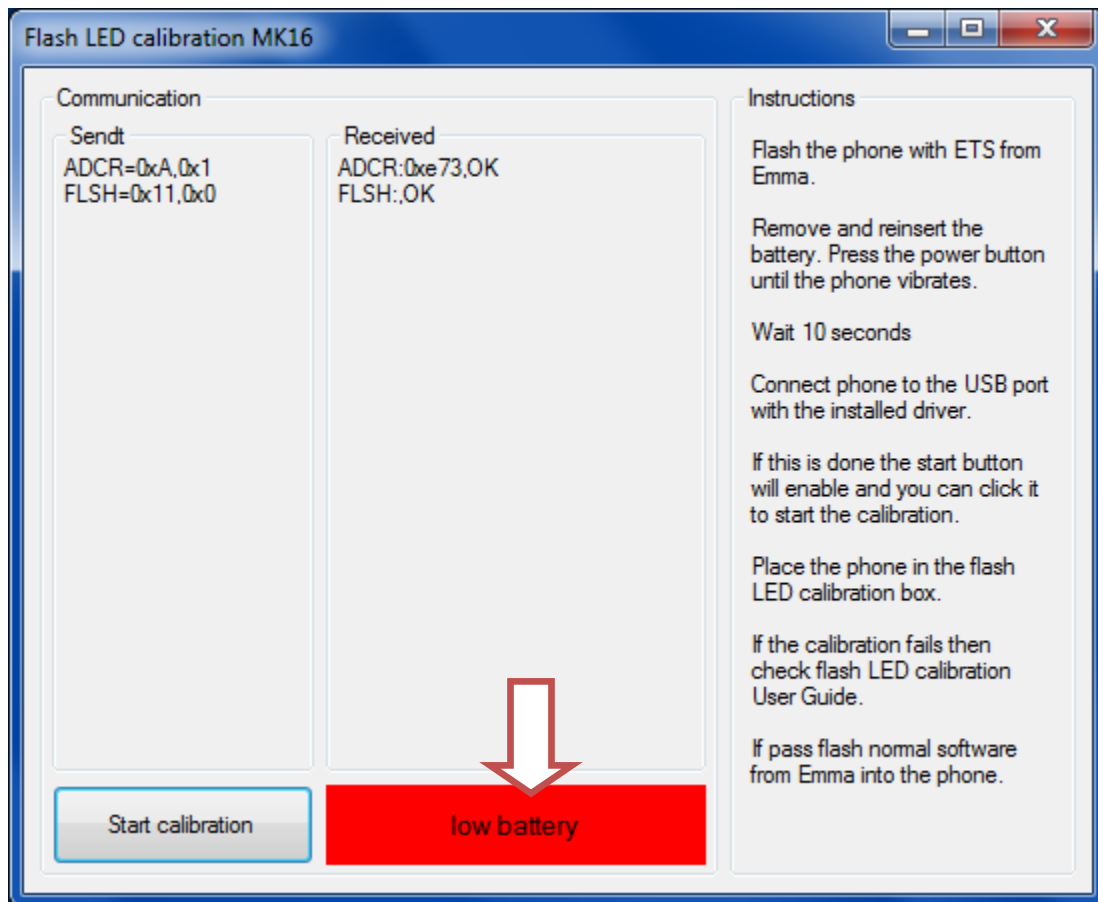
If right model with ETS is added to the port with the driver installed the start calibration button will enable.

Place the phone in the flash LED calibration box

Click start Calibration.



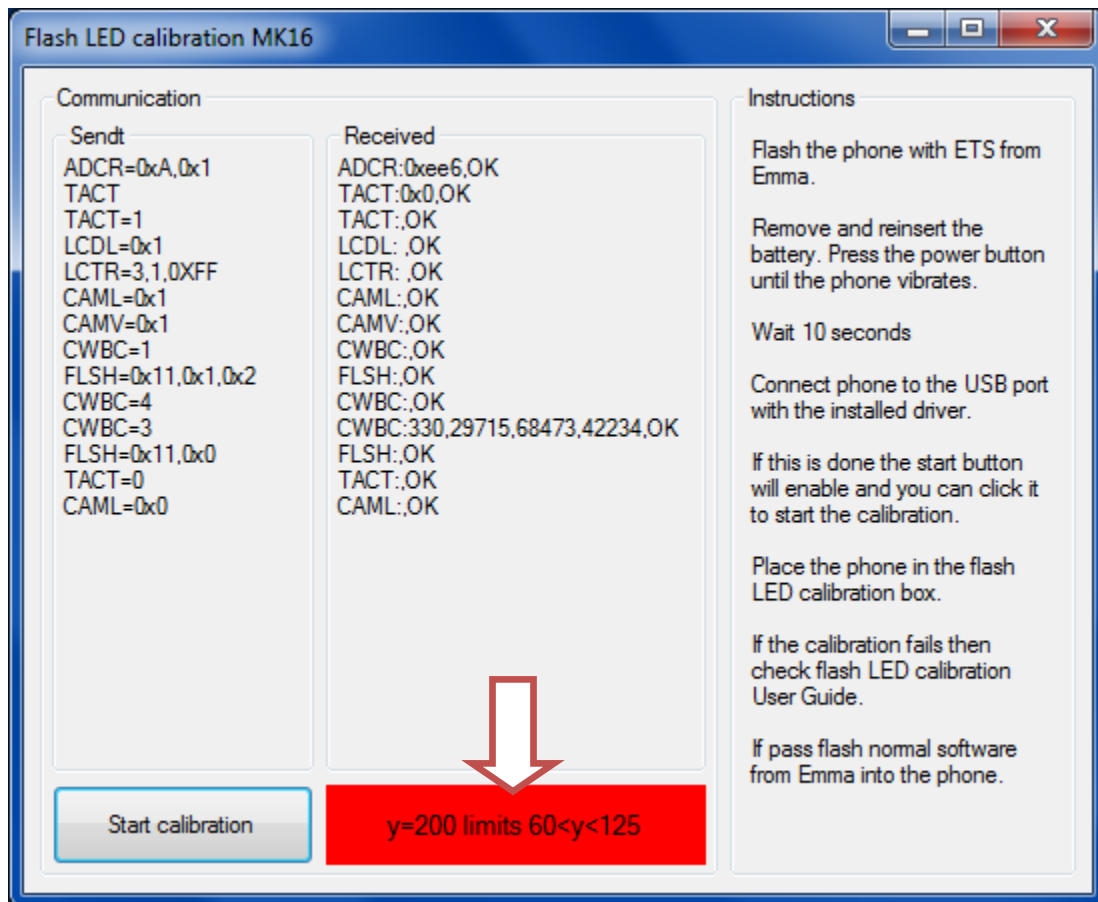
If the calibration fails with low battery replace the battery.



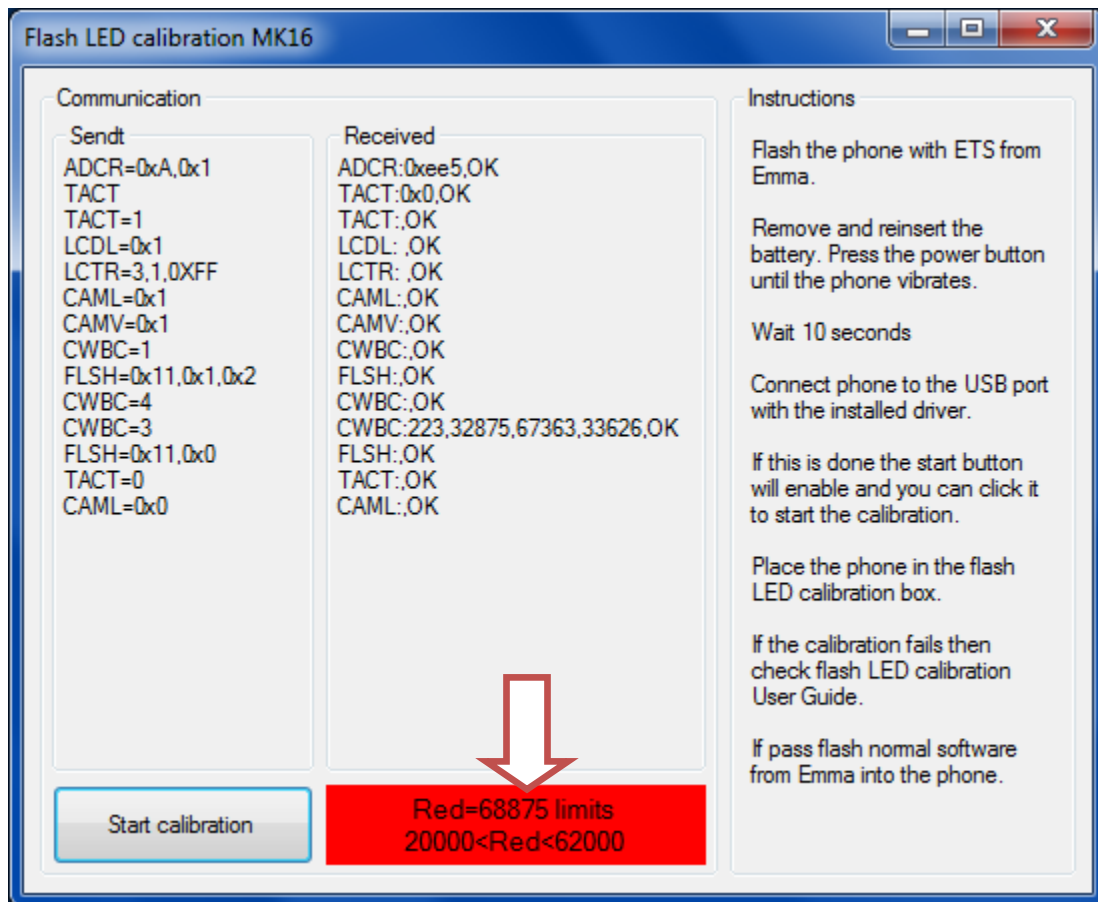
If the calibration fails with a y value error, then ensure that the main camera is pointing towards the white surface in the flash LED calibration box and retry.

If it fails several times then if flash LED turn on as normal replace the main camera.

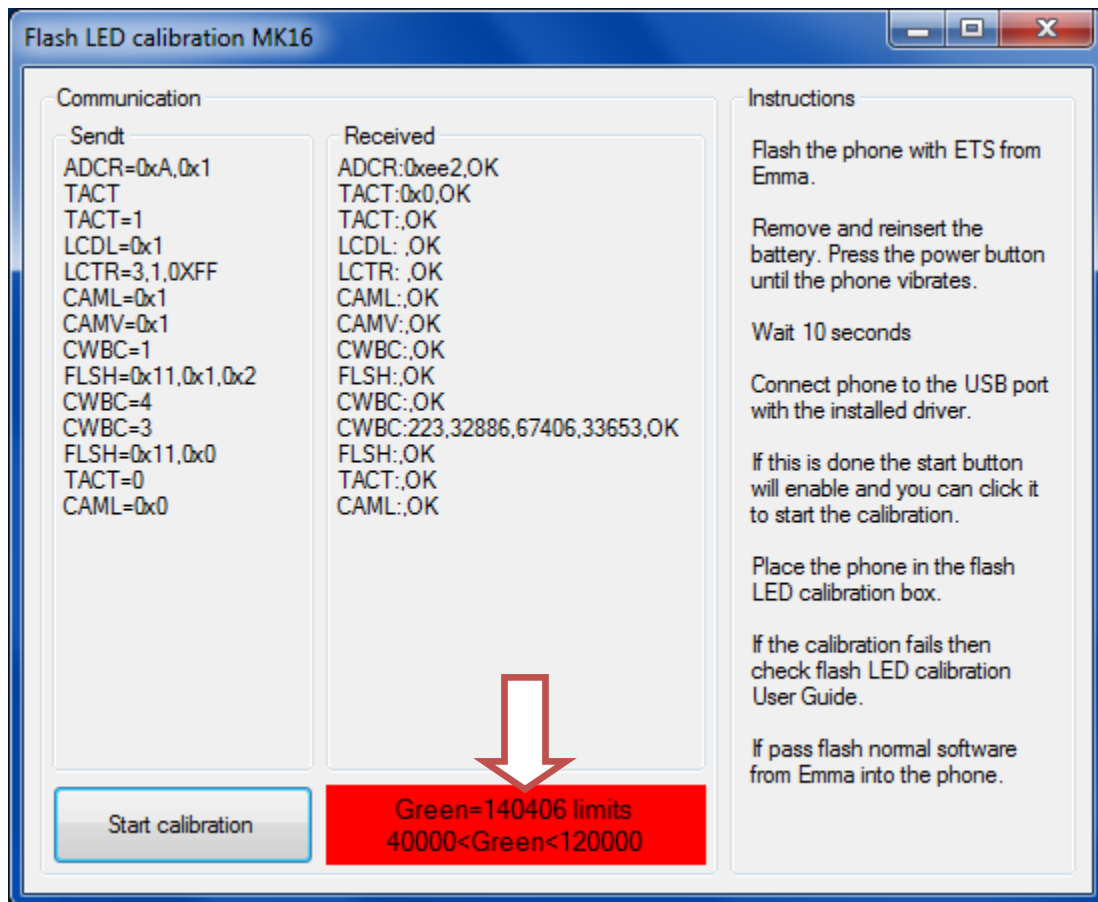
If not follow local instructions.



If the calibration fails with a Red value error, then ensure that the main camera is pointing towards the white surface in the flash LED calibration box and retry. If it fails several times then replace the main camera.

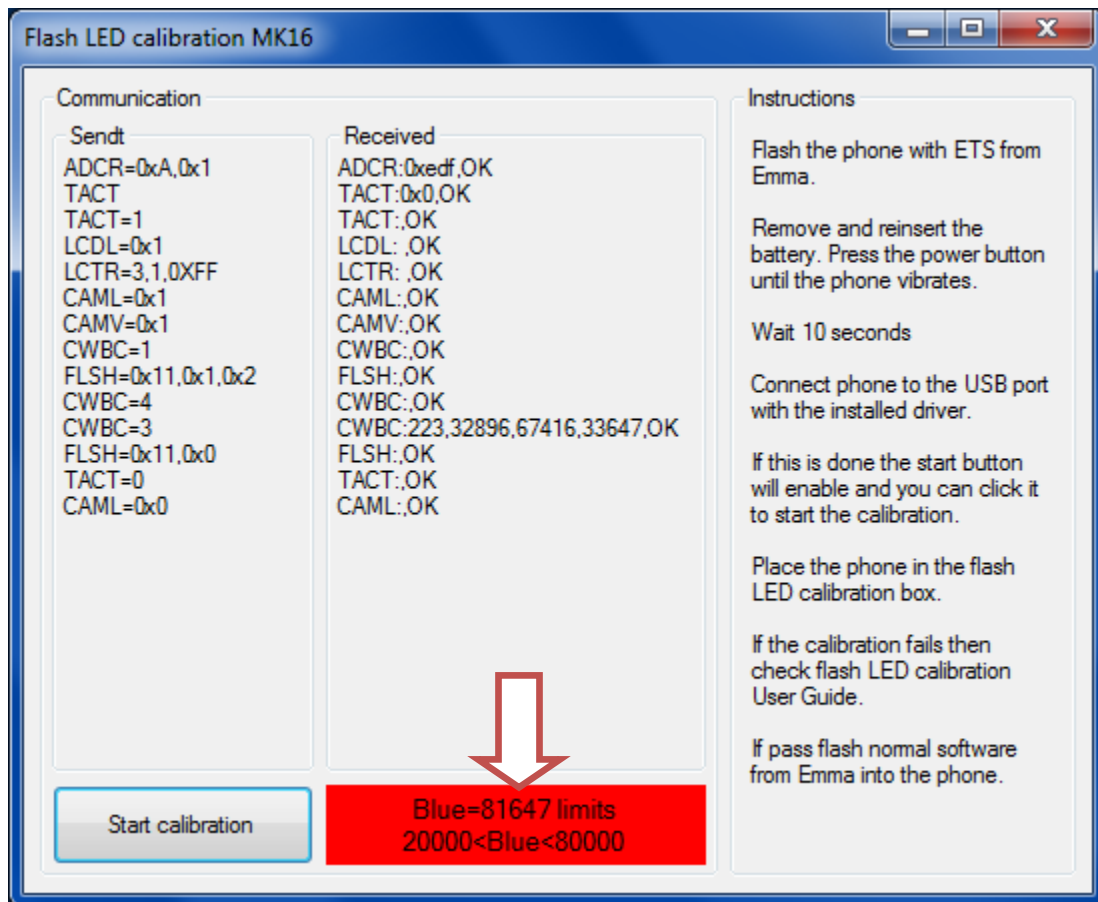


If the calibration fails with a Green value error, then ensure that the main camera is pointing towards the white surface in the flash LED calibration box and retry. If it fails several times then replace the main camera.

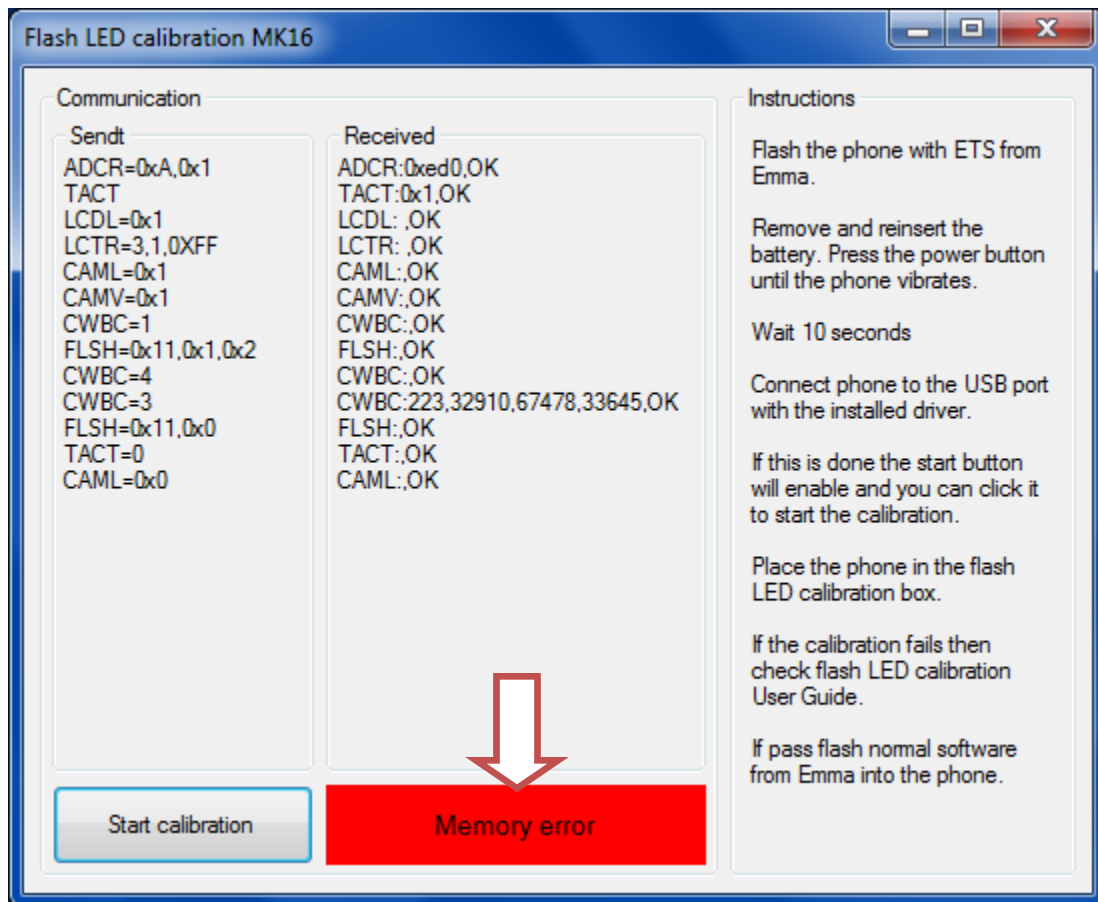




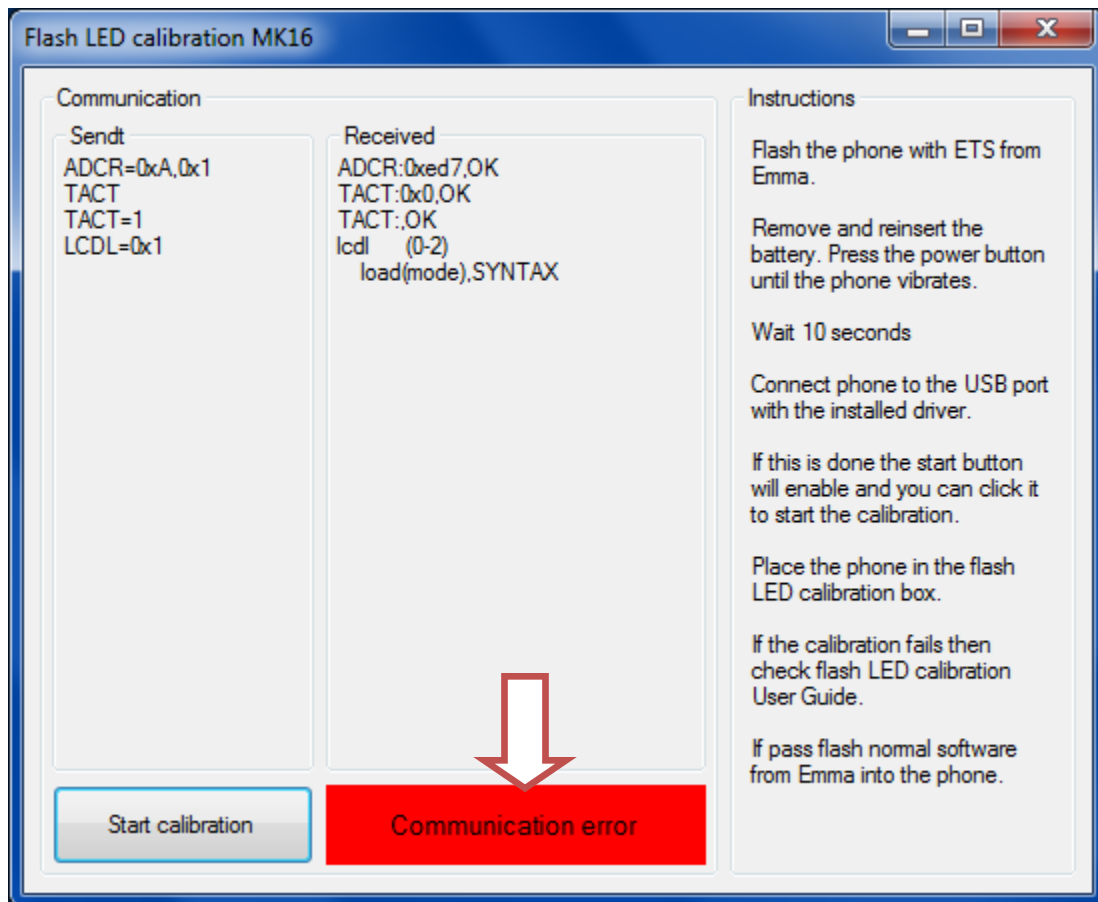
If the calibration fails with a Blue value error, then ensure that the main camera is pointing towards the white surface in the flash LED calibration box and retry. If it fails several times then replace the main camera.



If the calibration fails with a Memory error then retry. If it fails several times then follow locally instructions.



If the calibration fails with an communication error then retry. If it fails several times follow locally instructions.



If Pass flash normal software into the phone from Emma.

